

# Stormview

2 Bedrooms • 2 Bathrooms  
1,400 Sq. Ft.



A traditional home with a separate living room, walk-in pantry, and eat-in kitchen, Stormview combines the best of classic home design with fresh modern style. It's the best of both worlds, with amazing indoor-outdoor dining space.



**THE BLUFFS AT HURON**  
— A Parkbridge Community —

246 Lake Breeze Drive, Goderich, ON N7A 0B1  
BluffsAtHuronSales@parkbridge.com  
226-421-2431

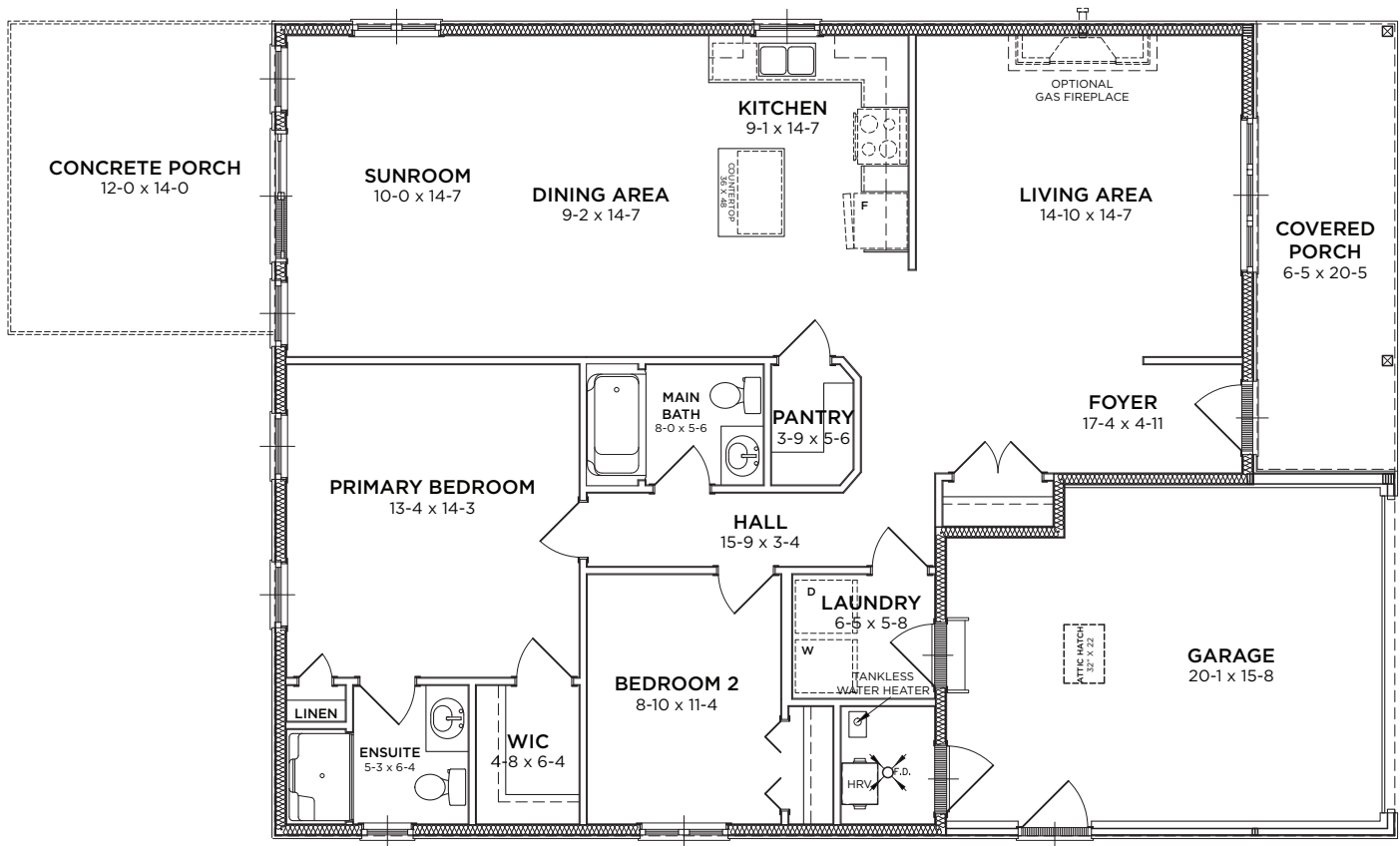
**TheBluffsAtHuron.com**

\*Parkbridge Lifestyle Communities Inc. makes no warranty or representation, expressed or implied, concerning the accuracy or completeness of the information contained within. This is not an offer to sell, nor an offer to buy, to residents of any province or state in which registration or other legal requirements have not been fulfilled. Prices, features, amenities and floor plan specifications represent the builder's current concepts and plans and are subject to change without notice. Substitution of materials shall be of equal or greater value. Actual usable floor space may vary from stated floor area. Brokers protected. Exclusive Listing Brokerage: PMA Brethour Realty Group. E. & O. E.

HHS 2024.03.19

# Stormview

2 Bedrooms • 2 Bathrooms  
1,400 Sq. Ft.



\*Parkbridge Lifestyle Communities Inc. makes no warranty or representation, expressed or implied, concerning the accuracy or completeness of the information contained within. This is not an offer to sell, nor an offer to buy, to residents of any province or state in which registration or other legal requirements have not been fulfilled. Prices, features, amenities and floor plan specifications represent the builder's current concepts and plans and are subject to change without notice. Substitution of materials shall be of equal or greater value. Actual usable floor space may vary from stated floor area. Brokers protected. Exclusive Listing Brokerage: PMA Brethour Realty Group. E. & O. E.