

FALL  
PROMOTION

# LAKESIDE

## W/Sunroom

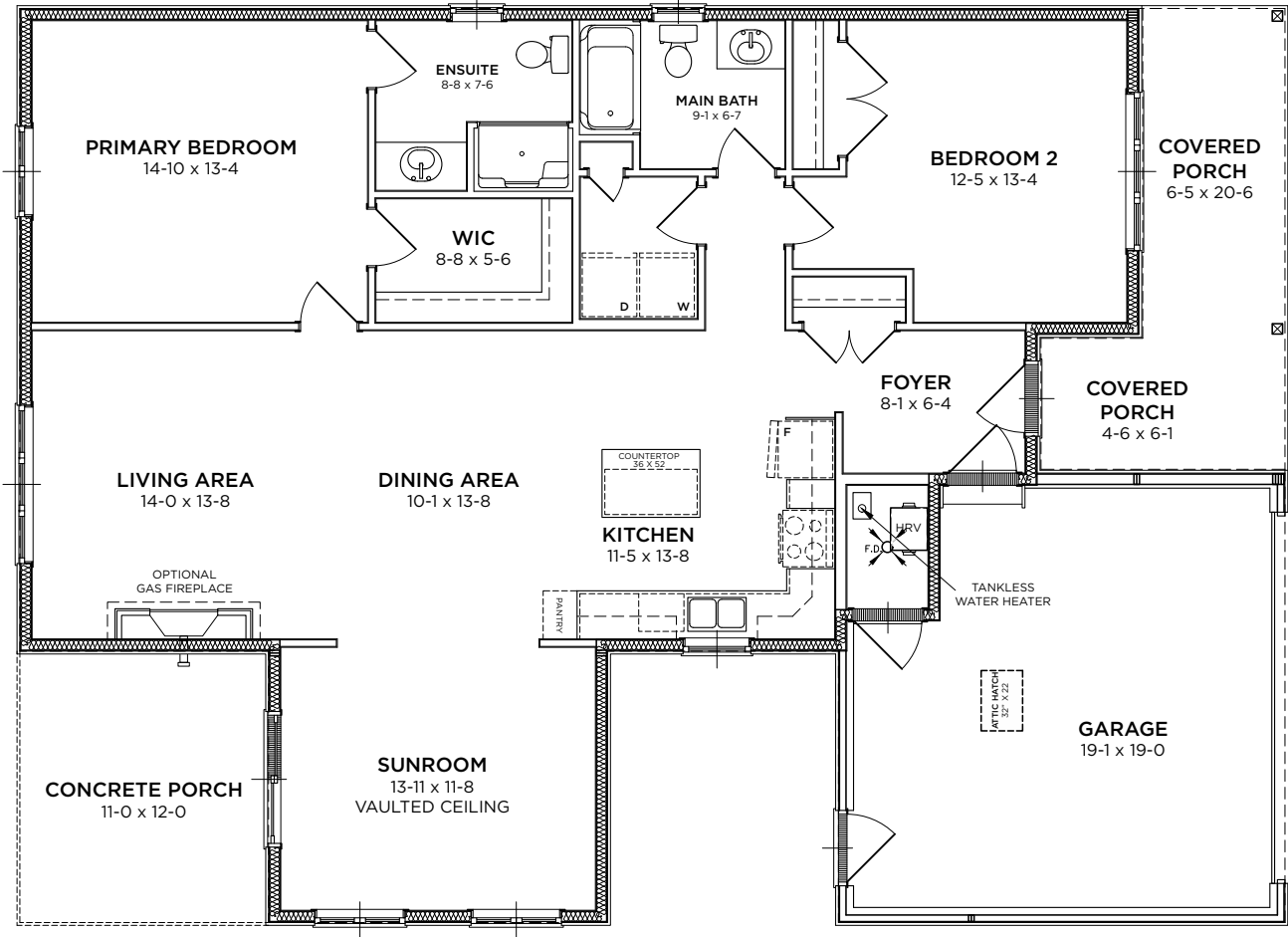
2 Bedrooms | 2 Bathrooms | 1,455 Sq. Ft.

~~\$502,900~~

**\$477,900**



A bright, open concept bungalow with a stunning sunroom, Lakeside is filled with light. A Primary suite at the back of the home includes a 3-piece ensuite and walk-in closet, with an additional bedroom and bathroom perfect for guests.



# LAKE SIDE

## W/Sunroom

2 Bedrooms | 2 Bathrooms | 1,455 Sq. Ft.

### UPGRADES INCLUDED

(Value of \$60,000\*)

#### Front & Rear Porch Options & Upgrades

- Gas Line to BBQ in Standard Location Near Door

#### General Interior Options & Upgrades

- High efficiency, modern A/C unit
- 2-Panel Interior Door Package
- Modern Trim Package

#### Lighting Options & Upgrades

- Pot Lights in Main Areas of Home (as per plan)
- Two Pot Lights Over Island with One Switch
- Pot Light Over Sink with One Switch
- Bedroom 1 Center Light with Blocking and One Switch

#### Living Room Fireplace

- Gas Fireplace with Classic Traditional Mantle
- Ceramic Tile Surround

#### Cabinetry Options and Upgrades

- Cambria Countertops for Kitchen and Island
- Cambria Countertops for Bathrooms
- Island Overhang on Long and Short Side with Cambria
- Upgrade to Staggered Cabinets
- Extended Cupboard Over Fridge
- Upgrade to Mid-Level Crown Moulding
- Upgrade to 18" Pantry with 4 Rollouts
- Upgrade to Lazy Susan In Corner Cupboard

#### Kitchen Options and Upgrades

- Blanco Granite Sink in White – Undermount
- Moen Integra Low Arc Pulldown Faucet in Chrome

#### Paint Options & Upgrades

- Upgrade All Paint to Eggshell Finish

#### Main Bathroom Options & Upgrades

- Upgrade to Undermount Ceramic Round Sink
- Moen Eva Single Lever Faucet in Chrome

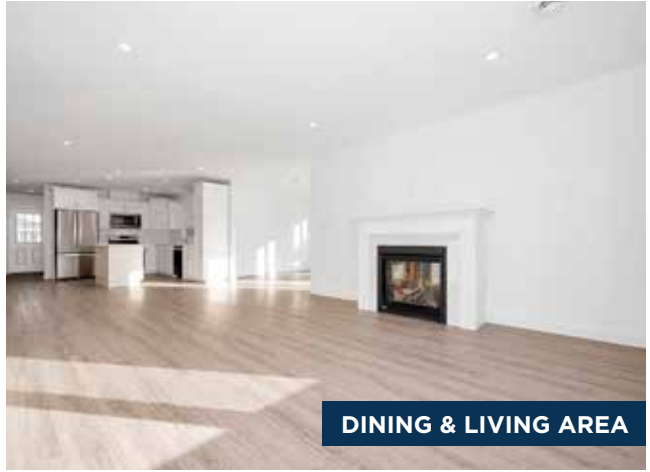
#### Ensuite Options & Upgrades

- Upgrade to Undermount Ceramic Round Sink
- Moen Eva Single Lever Faucet in Chrome
- Upgrade to American Standard Cadet Pro Right Height Toilet
- Pot Light for Tub/Shower on a Separate Switch

#### Stainless Steel Appliance Package

##### – Install Included

- Gas Line to Stove (Connection Not Included)
- Waterline to Fridge (Connection Not Included)
- Whirlpool Package - French Door Fridge, Microwave, Dishwasher (Stainless Tub)
- Upgrade to Whirlpool Gas Range



**Notes:**

---

---

---

---

---

---

---

---

**THE BLUFFS AT HURON**  
— A Parkbridge Community —

**Sales Centre & Model Homes**  
246 Lake Breeze Drive, Goderich, ON N7A 0B1  
BluffsAtHuronSales@parkbridge.com  
(226) 421-2431

**Parkbridge**

\*Parkbridge Lifestyle Communities Inc. makes no warranty or representation, expressed or implied, concerning the accuracy or completeness of the information contained within. This is not an offer to sell, nor an offer to buy, to residents of any province or state in which registration or other legal requirements have not been fulfilled. Features, amenities and floorplan specifications represent the builder's current concepts and plans and are subject to change without notice. Substitution of materials shall be of equal or greater value. Actual usable floor space may vary from stated floor area. Rendering is artist's concept Furniture not included. E.&O.E.