

CLIFFSIDE B

W/Sunroom

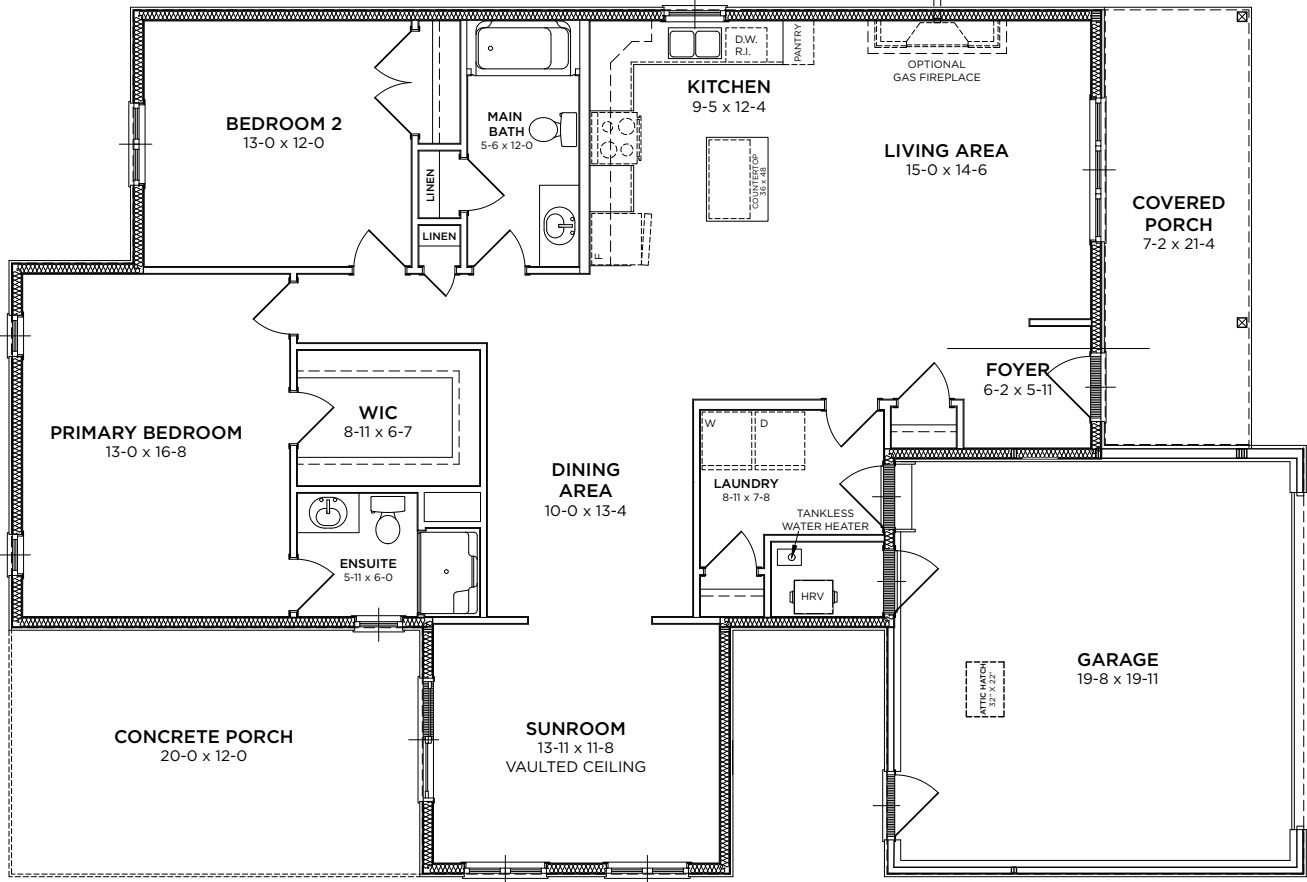
2 Bedrooms | 2 Bathrooms | 1,595 Sq. Ft.

\$543,900



LOT#379

Our most spacious model, Cliffside B opens directly into a gorgeous open concept living space, with a kitchen and living room just inside the entry. And with a dining room that leads into a spectacular sunroom, it's as functional as it is fabulous.



CLIFFSIDE B

W/Sunroom

2 Bedrooms | 2 Bathrooms | 1,595 Sq. Ft.

UPGRADES INCLUDED

(Value of \$68,000*)

General Exterior

- Weiser Brentwood Handleset in Satin Nickel
- 2 Additional Pot Lights in the Soffit

Front & Rear Porch Options & Upgrades

- Gas Line to BBQ in Standard Location Near Door

General Interior Options & Upgrades

- High efficiency, modern A/C unit

Lighting Options and Upgrades

- Pot Lights in Main Areas of Home (as per plan)
- Two Pendant Lights Over Island with One Switch
- Pot Light Over Sink with One Switch
- Bdrm 1 & 2 Center Light with Blocking and One Switch

Living Room Fireplace

- Gas Fireplace with Classic Traditional Mantle

Flooring Options and Upgrades

- Bedroom 1 & 2 Upgrade to LVP
(Same Colour as Rest of Home)

Cabinetry Options and Upgrades

- Cambria Countertops for Kitchen and Island
- Cambria Countertops for Bathrooms
- Island Overhang on Long and Short Side with Cambria
- Upgrade to Staggered Cabinets
- Extended Cupboard Over Fridge
- Upgrade to Mid-Level Crown Moulding
- Upgrade to 18" Pantry with 4 Rollouts
- 2 Additional Banks of Pot Drawers
(Left of Stove & Right Side of Island)
- Additional Mid-Level Light Valance
- Upgrade to Undercabinet Lighting
- (Does Not Include Valance)
- Upgrade to Lazy Susan In Corner Cupboard

Kitchen Option & Upgrades

- Blanco Granite Sink in White
- Undermount
- Moen Arbor High Arc Pulldown Faucet in Chrome

Paint Options & Upgrades

- Upgrade All Paint to Eggshell Finish

Main Bathroom Options & Upgrades

- Upgrade to Undermount Ceramic Round Sink
- Moen Eva Single Lever Faucet in Chrome
- Pot Light for Tub/Shower on a Separate Switch

Ensuite Options & Upgrades

- Upgrade to Undermount Ceramic Round Sink
- Moen Eva Single Lever Faucet in Chrome
- Upgrade to American Standard Cadet Pro Right Height Toilet
- Pot Light for Tub/Shower on a Separate Switch

Stainless Steel Appliance Package

- Install Included

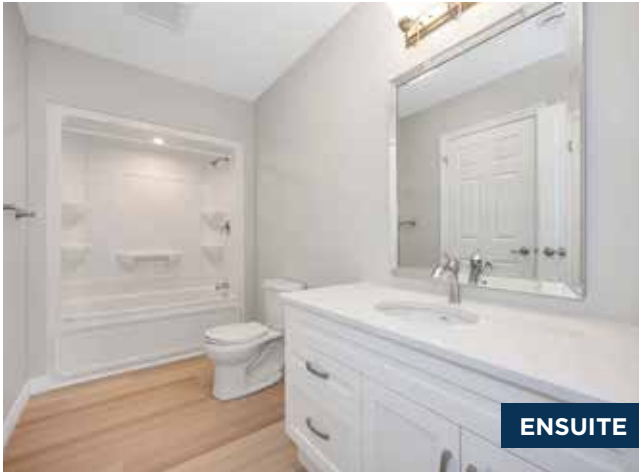
- Gas Line to Stove (Connection Not Included)
- Waterline to Fridge (Connection Not Included)
- Upgrade to Amana Gas Range
(To Replace Electric Range in Above Package)



PRIMARY BEDROOM



DINING & LIVING AREA



ENSUITE



SUN ROOM

Notes:

THE BLUFFS AT HURON
— A Parkbridge Community —

Sales Centre & Model Homes
246 Lake Breeze Drive, Goderich, ON N7A 0B1
BluffsAtHuronSales@parkbridge.com
(226) 421-2431

Parkbridge

*Parkbridge Lifestyle Communities Inc. makes no warranty or representation, expressed or implied, concerning the accuracy or completeness of the information contained within. This is not an offer to sell, nor an offer to buy, to residents of any province or state in which registration or other legal requirements have not been fulfilled. Features, amenities and floorplan specifications represent the builder's current concepts and plans and are subject to change without notice. Substitution of materials shall be of equal or greater value. Actual usable floor space may vary from stated floor area. Rendering is artist's concept Furniture not included. E.&O.E.