

# STORMVIEW

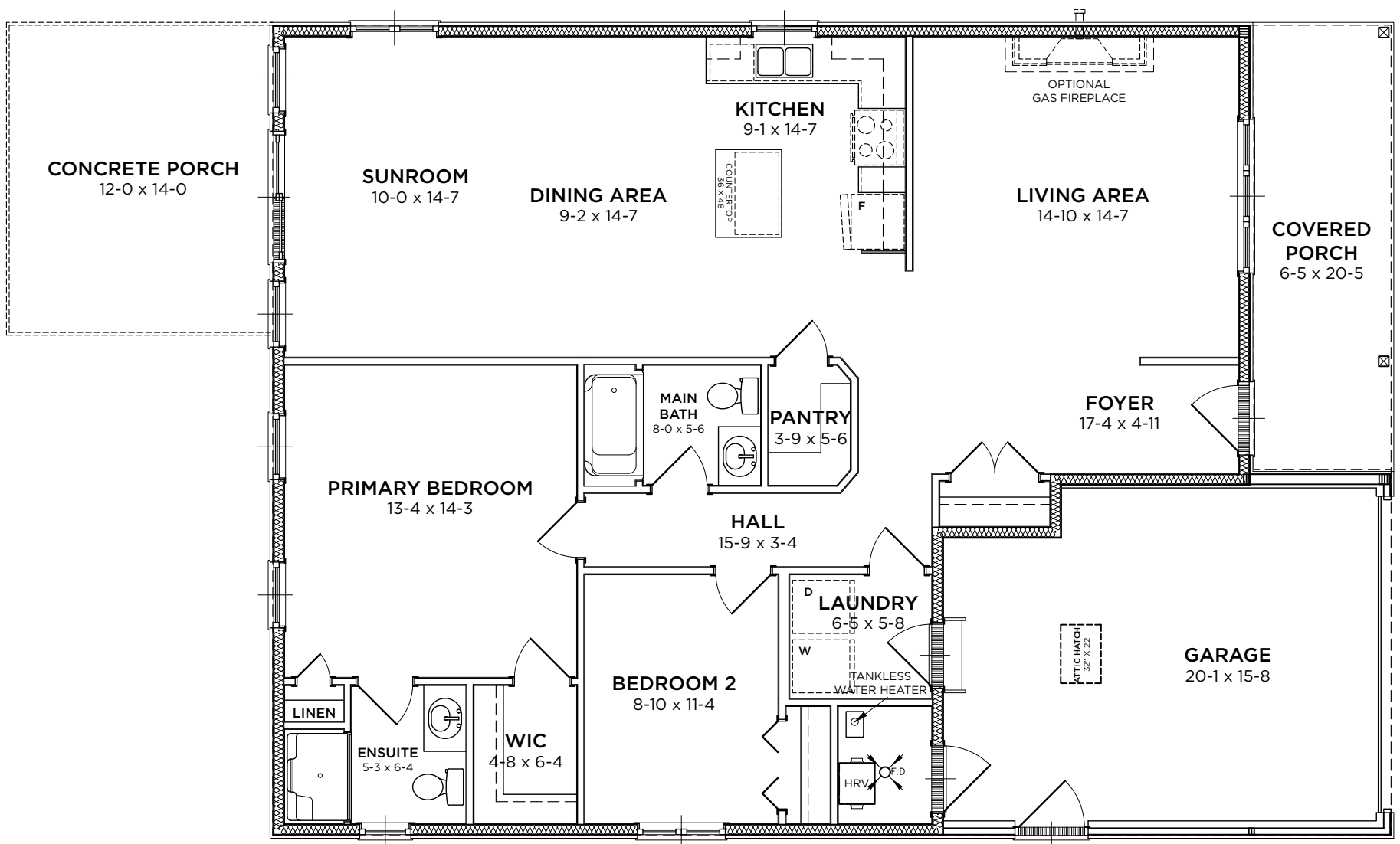
LOT#  
**341**

**\$449,900**

2 Bedrooms | 2 Bathrooms  
1,400 Sq. Ft.



A traditional home with a separate living room, walk-in pantry, and eat-in kitchen, Stormview combines the best of classic home design with fresh modern style. It's the best of both worlds, with amazing indoor-outdoor dining space.



# STORMVIEW

2 Bedrooms | 2 Bathrooms  
1,400 Sq. Ft.



## UPGRADES INCLUDED IN LOT 341

### General Exterior

- 5 Coach Lights with an Additional Pot Light in the Soffit

### Front & Rear Porch Options & Upgrades

- Gas Line to BBQ in Standard Location Near Door

### General Interior Options & Upgrades

- High efficiency, modern A/C unit

### Electrical Options & Upgrades

- Additional Cable Outlet
- Additional Phone Line
- Additional Receptacle
- Additional USB Receptacle

### Lighting Options & Upgrades

- Two Pendant Lights Over Island with One Switch
- Centre Light with Blocking and Two Switches in the Sunroom
- Additional Interior Pot Light
- Additional Dimmer Switch

### Living Room Fireplace

- Gas Line and Electrical Rough-In for Future Fireplace

### Flooring Options & Upgrades

- Bedroom 1 Flooring Upgrade to LVP (Same Colour As Rest of Home)
- Bedroom 2 Flooring Upgrade to LVP (Same Colour As Rest of Home)

### Cabinetry Options and Upgrades

- Upgrade to Extended Cupboard Over Fridge
- Added One Bank of Oversize Pot Drawers in the Island
- Upgrade to Lazy Susan In Corner Cupboard

### Paint Options & Upgrades

- Upgrade All Paint to Eggshell Finish