

CREEKVIEW

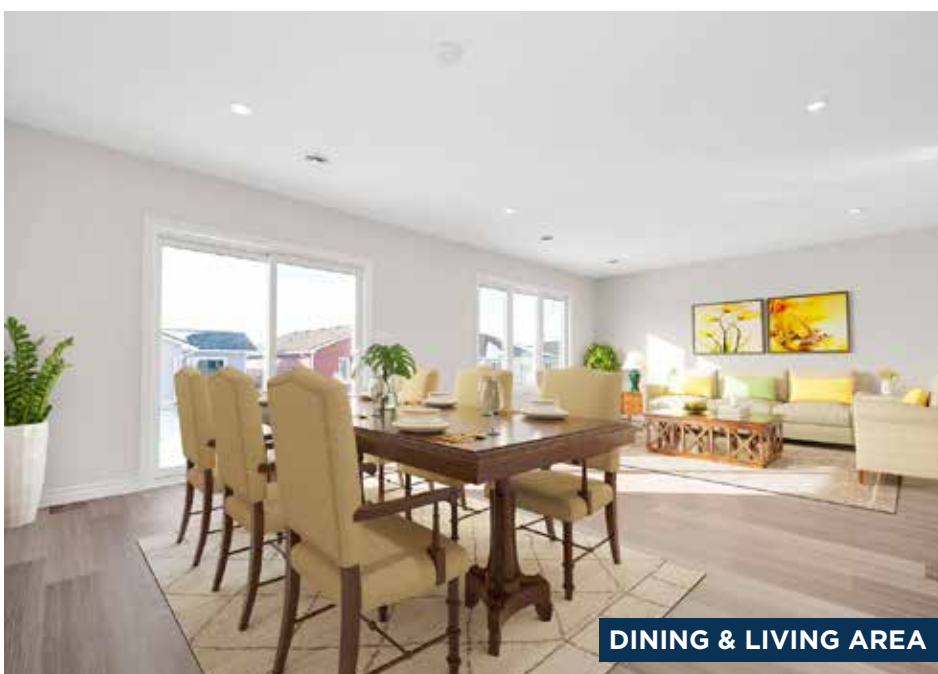
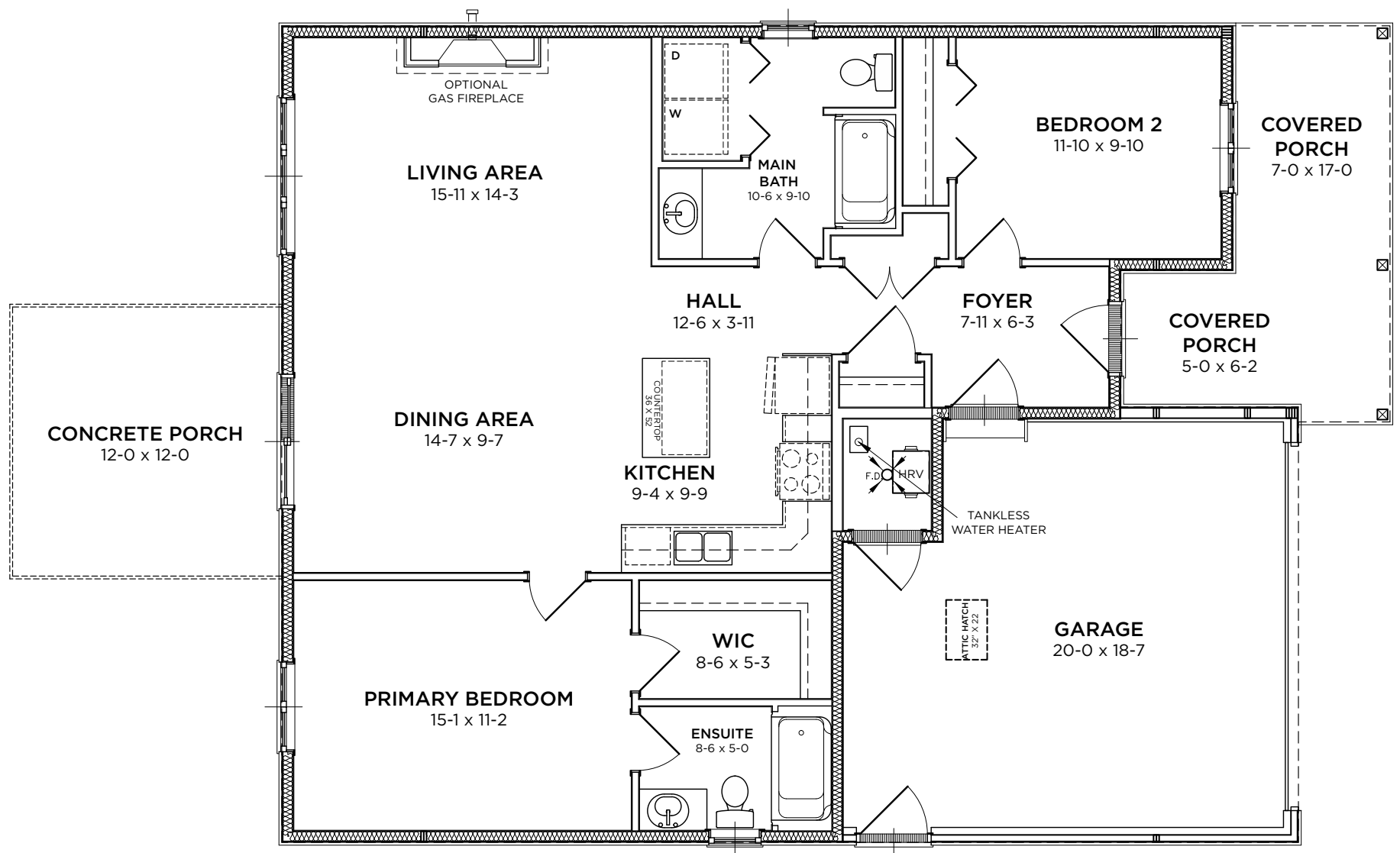
LOT#
388

\$444,900

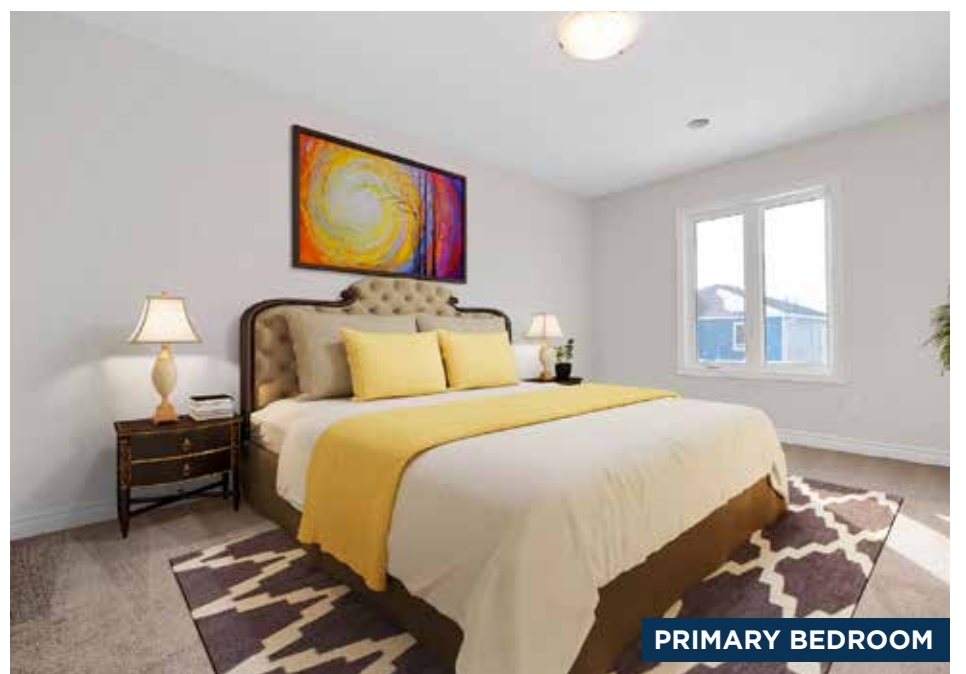
2 Bedrooms | 2 Bathrooms
1,177 Sq. Ft.



A stylish two-bedroom bungalow, Creekview optimizes the use of space. Each bedroom is located at opposite sides of the home, while an open concept living space brings you together at the heart of the home.



DINING & LIVING AREA



PRIMARY BEDROOM

CREEKVIEW

2 Bedrooms | 2 Bathrooms
1,177 Sq. Ft.



UPGRADES INCLUDED IN LOT 388

General Exterior

- 5 Standard Pot Lights + 1 additional (as per plan)

Front & Rear Porch Options & Upgrades

- Gas Line to BBQ in Standard Location Near Door

General Interior Options & Upgrades

- High efficiency, modern A/C unit

Electrical Options & Upgrades

- Additional Cable Outlet
- Additional Phone Line
- Additional Receptacle
- Additional USB Receptacle

Lighting Options and Upgrades

- Pot Lights in Main Areas of Home (as per plan)
- Two Pendant Lights Over Island with One Switch
- Bedroom 1 Center Light with Blocking and One Switch
- Additional Interior Pot Light (as per plan)
- Additional Dimmer Switch

Cabinetry Options and Upgrades

- Cambria Countertops for Kitchen and Island
- Cambria Countertops for Bathrooms
- Extend Upper Cabinets to 35" Tall
- Upgrade to Extended Cupboard Over Fridge
- Upgrade to Mid-Level Crown Moulding
- Additional Pot Drawer in Kitchen Island
- Upgrade to Lazy Susan In Corner Cupboard

Kitchen Options and Upgrades

- Double Stainless Steel Undermount Sink

Paint Options & Upgrades

- Upgrade All Paint to Eggshell Finish

Main Bathroom Options & Upgrades

- Undermount Ceramic Round Sink

Ensuite Options & Upgrades

- American Standard Boxe™ Under Counter Sink
- Upgrade to American Standard Cadet Pro Right Height Toilet
- Pot Light for Tub/Shower on a Separate Switch

Stainless Steel Appliance Package - Install Included

- Gas Line to Stove (Connection Not Included)
- Waterline to Fridge (Connection Not Included)
- Upgrade to Amana Gas Range