

CREEKVIEW

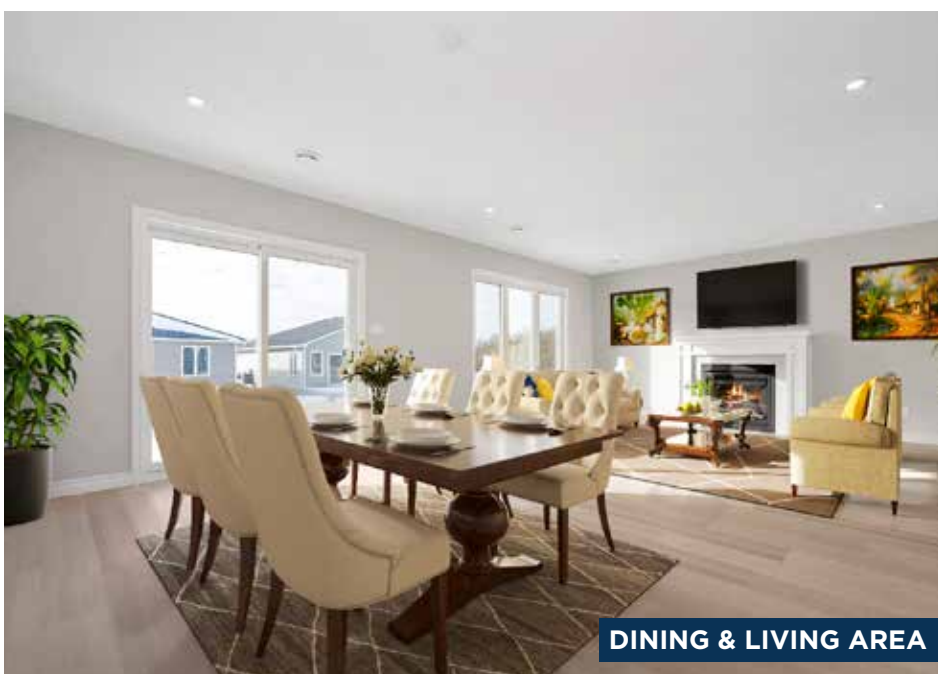
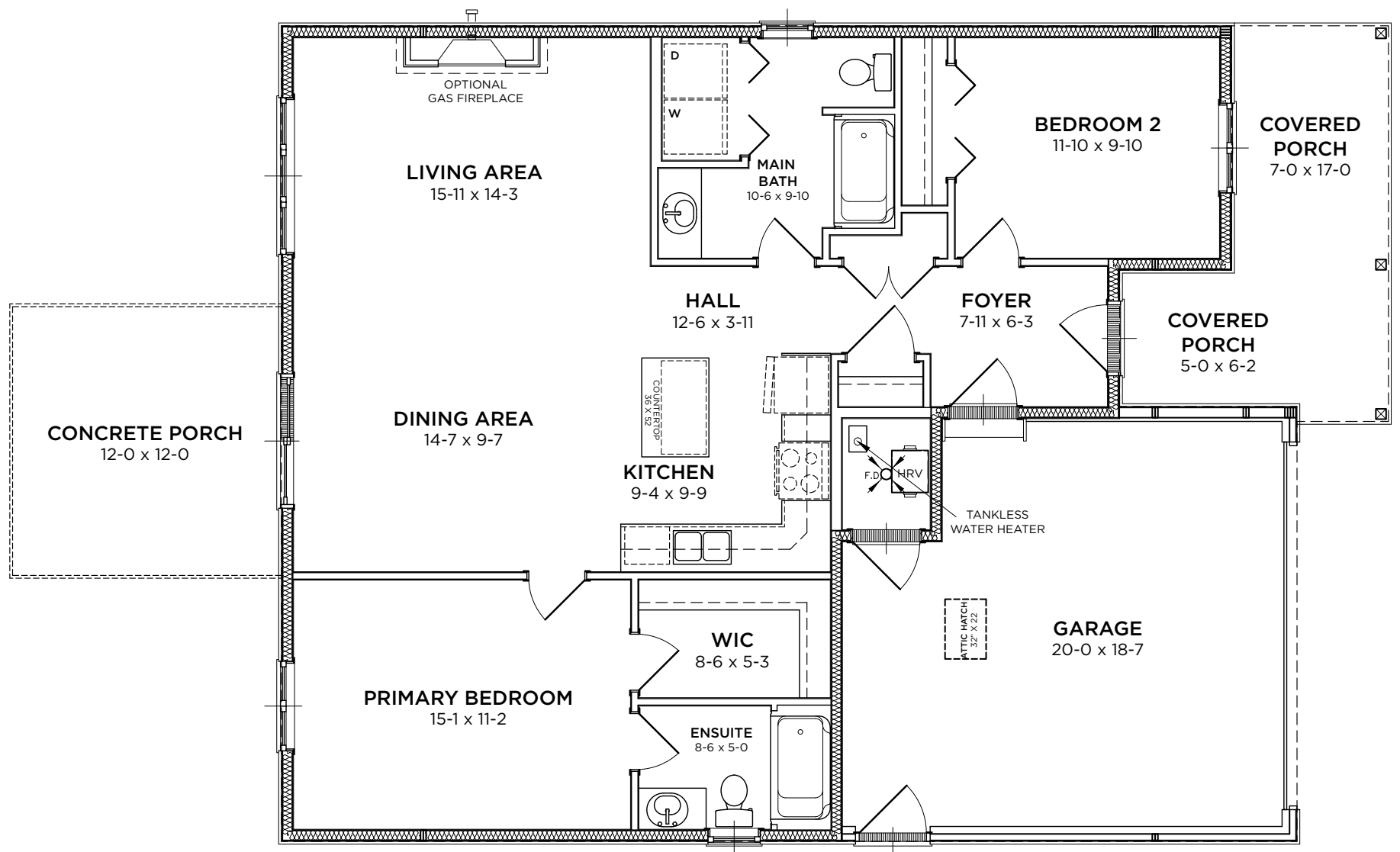
LOT#
386

\$441,900

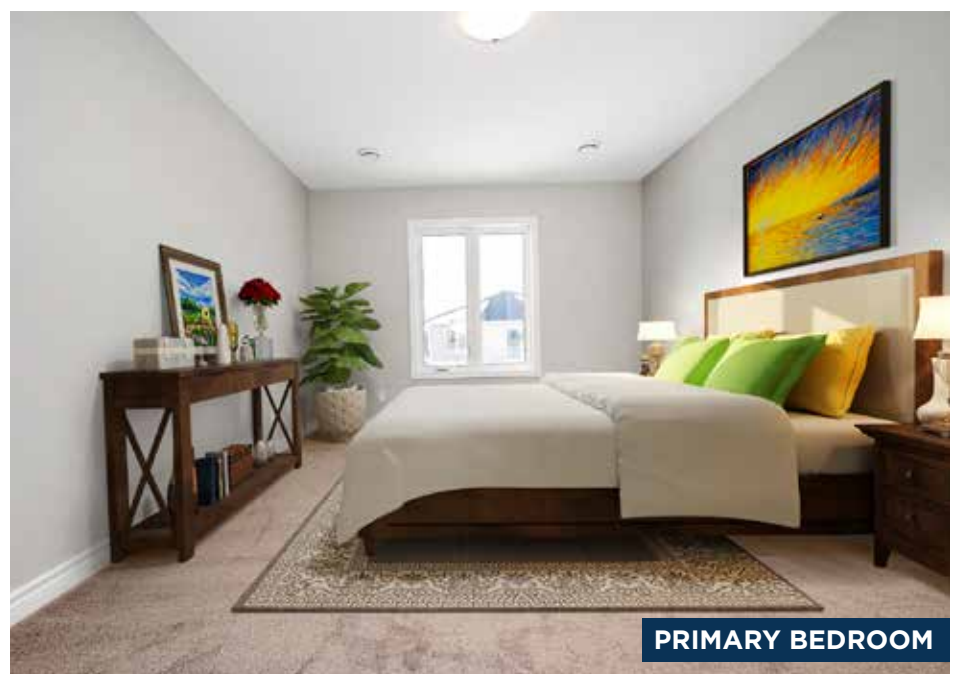
2 Bedrooms | 2 Bathrooms
1,177 Sq. Ft.



A stylish two-bedroom bungalow, Creekview optimizes the use of space. Each bedroom is located at opposite sides of the home, while an open concept living space brings you together at the heart of the home.



DINING & LIVING AREA



PRIMARY BEDROOM

CREEKVIEW

2 Bedrooms | 2 Bathrooms
1,177 Sq. Ft.



UPGRADES INCLUDED IN LOT 386

General Exterior

- 5 Standard Pot Lights plus an Additional Pot Light in the Soffit

Front & Rear Porch Options & Upgrades

- Gas Line to BBQ in Standard Location Near Door

General Interior Options & Upgrades

- High efficiency, modern A/C unit
- 2-Panel Interior Door Package

Electrical Options & Upgrades

- Additional Cable Outlet
- Additional Phone Line
- Additional Receptacle
- Additional USB Receptacle

Lighting Options & Upgrades

- Pot Lights in Main Areas of Home (as per plan)
- Two Pendant Lights Over Island with One Switch
- Bedroom 1 Center Light with Blocking and One Switch
- Additional Interior Pot Light
- Additional Dimmer Switch

Living Room Fireplace

- Gas Fireplace with Classic Contemporary Mantle
- Ceramic Tile Surround

Cabinetry Options and Upgrades

- Upgrade to Staggered Cabinets
- Extended Cupboard Over Fridge
- Upgrade to Mid-Level Crown Moulding
- Added One Bank of Oversize Pot Drawers in the Island Right Hand Side
- Additional Mid-Level Light Valance
- Upgrade to Undercabinet Lighting - Does Not Include Valance
- Upgrade to Lazy Susan In Corner Cupboard

Kitchen Options and Upgrades

- Moen Arbor High Arc Pulldown Faucet in Chrome

Paint Options & Upgrades

- Upgrade All Paint to Eggshell Finish

Main Bathroom Options & Upgrades

- Moen Eva Single Lever Faucet in Chrome

Ensuite Options & Upgrades

- Moen Eva Single Lever Faucet in Chrome
- Upgrade to American Standard Cadet Pro Right Height Toilet
- Pot Light for Tub/Shower on a Separate Switch

Stainless Steel Appliance Package - Install Included

- Gas Line to Stove (Connection Not Included)
- Waterline to Fridge (Connection Not Included)
- Upgrade to Amana Gas Range

Sales Centre & Model Homes

246 Lake Breeze Drive, Goderich, ON N7A 0B1
BluffsAtHuronSales@parkbridge.com | (226) 421-2431

THE BLUFFS AT HURON
A Parkbridge Community

Parkbridge