

STORMVIEW

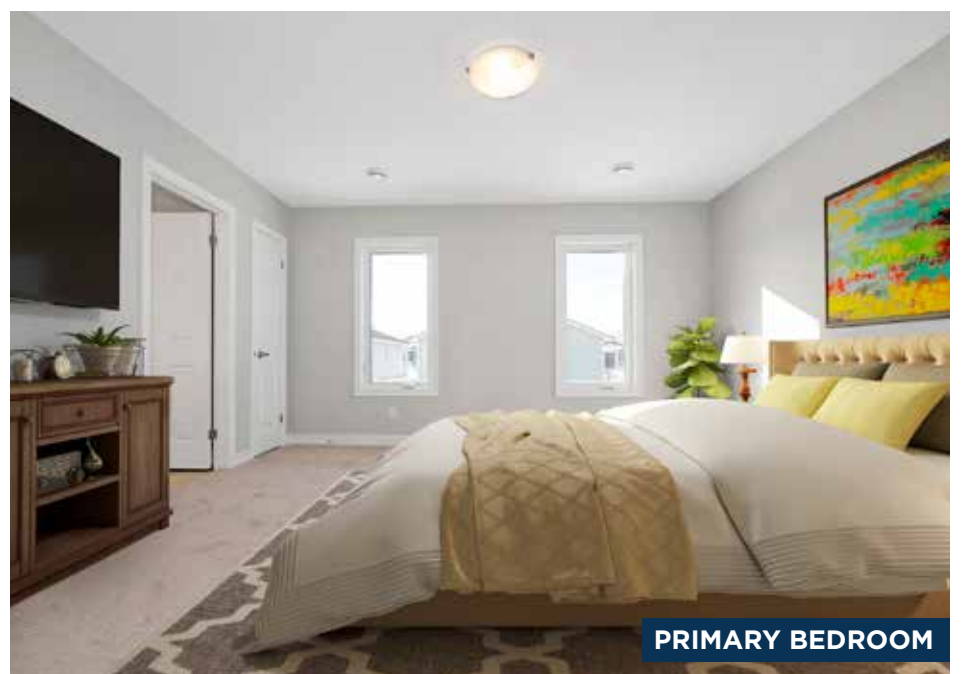
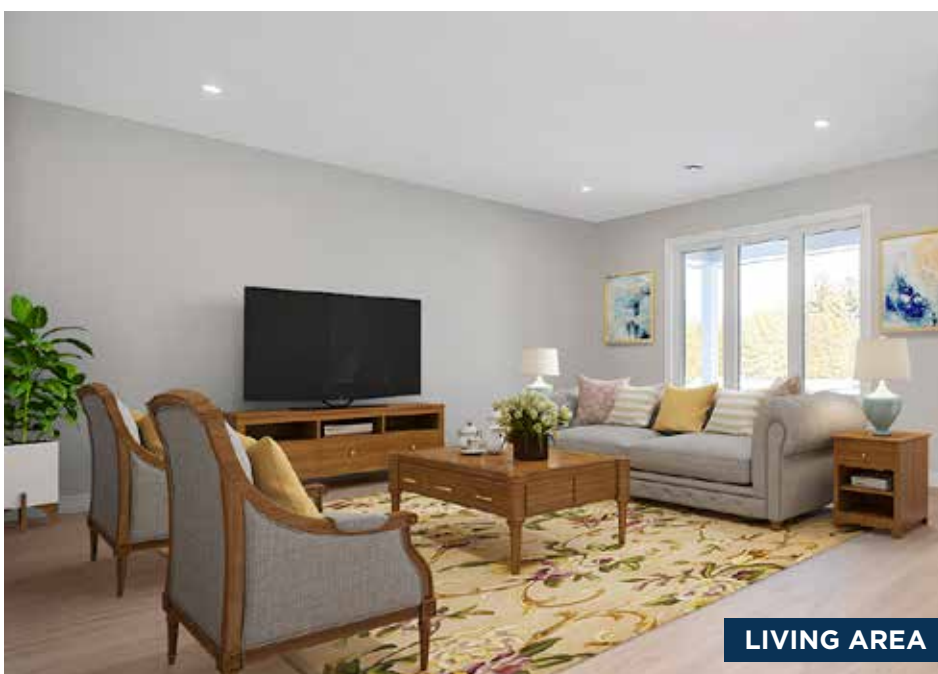
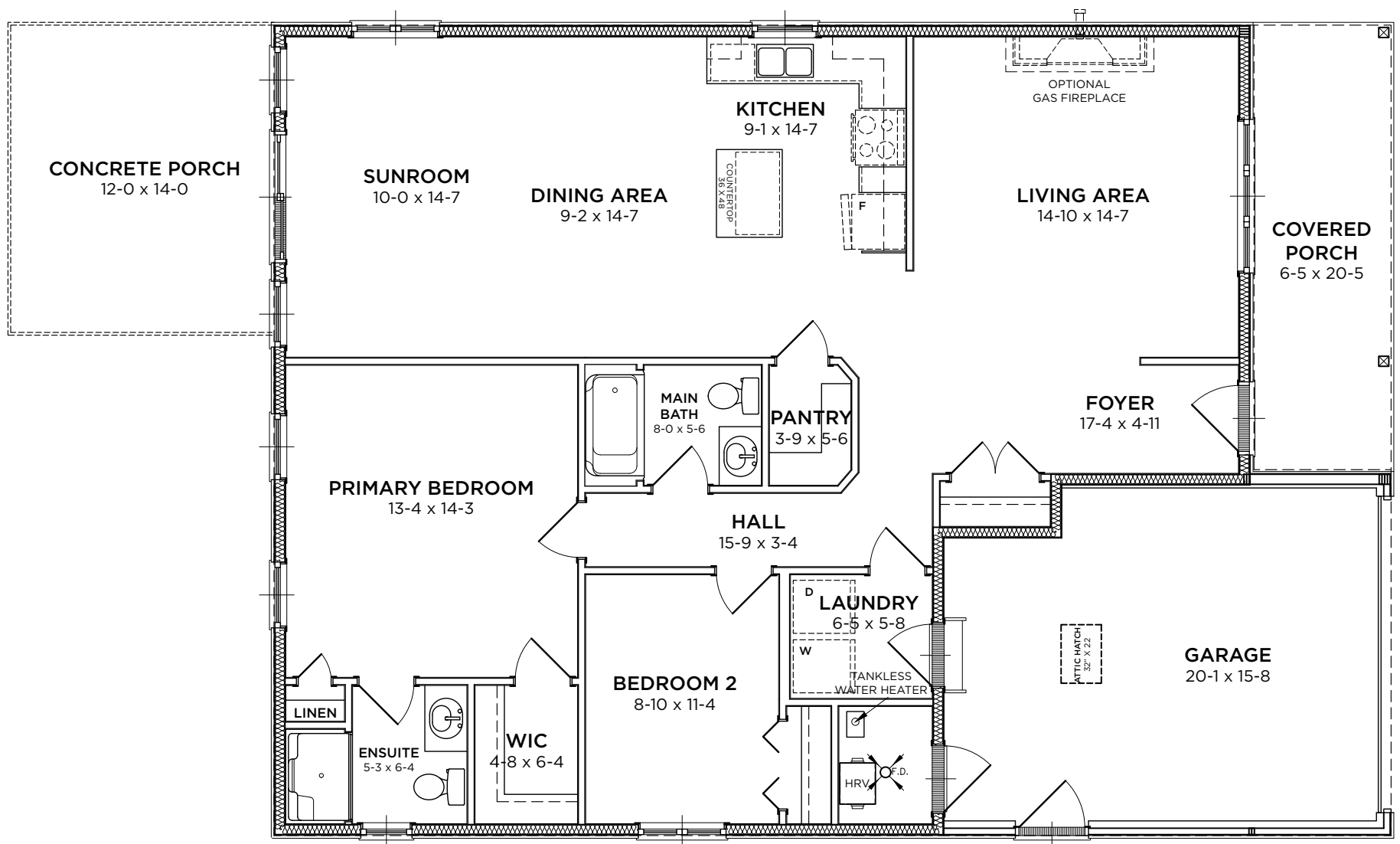
LOT#
385

\$480,900

2 Bedrooms | 2 Bathrooms
1,400 Sq. Ft.

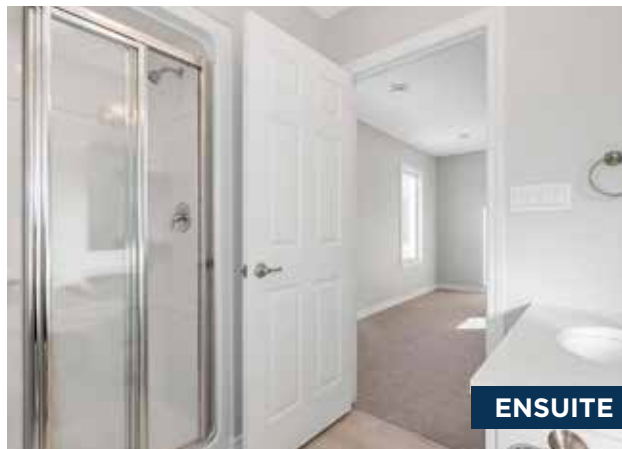


A traditional home with a separate living room, walk-in pantry, and eat-in kitchen, Stormview combines the best of classic home design with fresh modern style. It's the best of both worlds, with amazing indoor-outdoor dining space.



STORMVIEW

2 Bedrooms | 2 Bathrooms
1,400 Sq. Ft.



UPGRADES INCLUDED IN LOT 385

General Exterior

- 5 Coach Lights and Additional Pot Light in the Soffit

Front & Rear Porch Options & Upgrades

- Gas Line to BBQ in Standard Location Near Door

General Interior Options & Upgrades

- High efficiency, modern A/C unit

Electrical Options & Upgrades

- Additional Cable Outlet
- Additional Phone Line
- Additional Receptacle
- Additional USB Receptacle

Lighting Options & Upgrades

- Pot Lights in Main Areas of Home (as per plan)
- Two Pendant Lights Over Island with One Switch
- Pot Light Over Sink with One Switch
- Bedrm 1 Center Light with Blocking and One Switch
- Additional Interior Pot Light
- Additional Dimmer Switch

Cabinetry Options and Upgrades

- Cambria Countertops for Kitchen and Island
- Cambria Countertops for Bathrooms
- Extend Upper Cabinets to 35" Tall
- Extended Cupboard Over Fridge
- Upgrade to Mid-Level Crown Moulding
- Added One Bank of Oversize Pot Drawers in the Island Left Hand Side

Kitchen Options and Upgrades

- Blanco Granite Sink in White - Undermount

Paint Options & Upgrades

- Upgrade All Paint to Eggshell Finish

Main Bathroom Options & Upgrades

- Upgrade to Undermount Ceramic Round Sink
- Moen Eva Single Lever Faucet in Chrome
- Pot Light for Tub/Shower on a Separate Switch

Ensuite Options & Upgrades

- Upgrade to Undermount Ceramic Round Sink
- Moen Eva Single Lever Faucet in Chrome
- Upgrade to American Standard Cadet Pro Right Height Toilet
- Pot Light for Tub/Shower on a Separate Switch

Stainless Steel Appliance Package - Install Included

- Gas Line to Stove (Connection Not Included)
- Waterline to Fridge (Connection Not Included)
- Upgrade to Amana Gas Range

THE BLUFFS AT HURON
A Parkbridge Community

Sales Centre & Model Homes
246 Lake Breeze Drive, Goderich, ON N7A 0B1
BluffsAtHuronSales@parkbridge.com | (226) 421-2431

Parkbridge