

CLIFFSIDE B

W/Sunroom

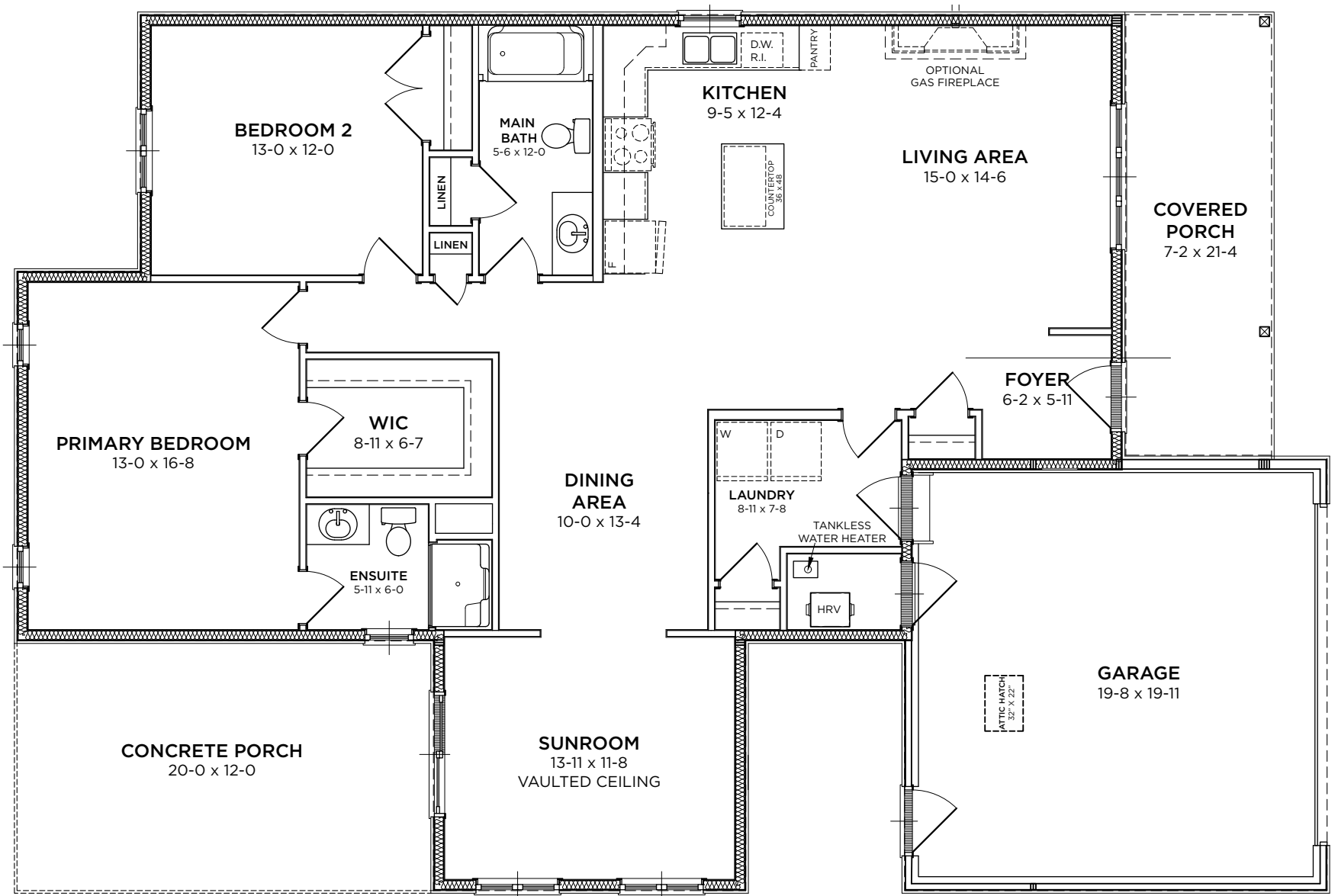
LOT#
379

\$543,900

2 Bedrooms | 2 Bathrooms
1,595 Sq. Ft.



Our most spacious model, Cliffside B opens directly into a gorgeous open concept living space, with a kitchen and living room just inside the entry. And with a dining room that leads into a spectacular sunroom, it's as functional as it is fabulous.



CLIFFSIDE B W/Sunroom

2 Bedrooms | 2 Bathrooms
1,595 Sq. Ft.



FOYER



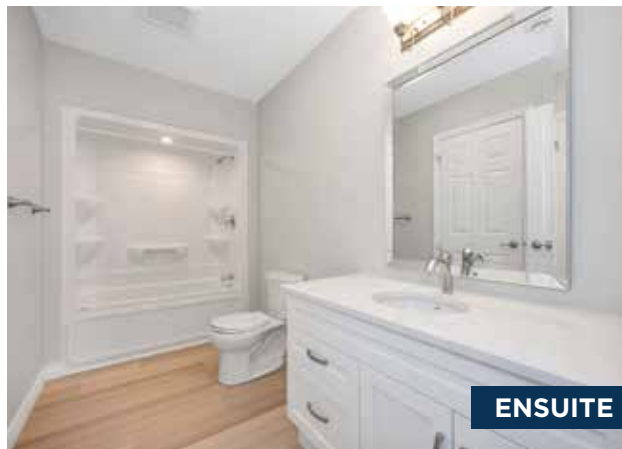
PRIMARY BEDROOM



BEDROOM 2



DINING & LIVING AREA



ENSUITE



SUN ROOM

UPGRADES INCLUDED IN LOT 379

General Exterior

- Weiser Brentwood Handleset in Satin Nickel
- 2 Additional Pot Lights in the Soffit

Front & Rear Porch Options & Upgrades

- Gas Line to BBQ in Standard Location Near Door

General Interior Options & Upgrades

- High efficiency, modern A/C unit

Electrical Options & Upgrades

- Additional Cable Outlet
- Additional Phone Line
- Additional Receptacle
- Additional USB Receptacle

Lighting Options and Upgrades

- Pot Lights in Main Areas of Home (as per plan)
- Two Pendant Lights Over Island with One Switch
- Pot Light Over Sink with One Switch
- Bdrm 1 & 2 Center Light with Blocking and One Switch
- Additional Interior Pot Light (as per plan)
- Additional Dimmer Switch

Living Room Fireplace

- Gas Fireplace with Classic Traditional Mantle

Flooring Options and Upgrades

- Bedroom 1 & 2 Upgrade to LVP (Same Colour as Rest of Home)

Cabinetry Options and Upgrades

- Cambria Countertops for Kitchen and Island
- Cambria Countertops for Bathrooms
- Island Overhang on Long and Short Side with Cambria

- Upgrade to Staggered Cabinets
- Extended Cupboard Over Fridge
- Upgrade to Mid-Level Crown Moulding
- Upgrade to 18" Pantry with 4 Rollouts
- 2 Additional Banks of Pot Drawers (Left of Stove & Right Side of Island)
- Additional Mid-Level Light Valance
- Upgrade to Undercabinet Lighting - (Does Not Include Valance)
- Upgrade to Lazy Susan In Corner Cupboard

Kitchen Option & Upgrades

- Blanco Granite Sink in White - Undermount
- Moen Arbor High Arc Pulldown Faucet in Chrome

Paint Options & Upgrades

- Upgrade All Paint to Eggshell Finish

Main Bathroom Options & Upgrades

- Upgrade to Undermount Ceramic Round Sink
- Moen Eva Single Lever Faucet in Chrome
- Pot Light for Tub/Shower on a Separate Switch

Ensuite Options & Upgrades

- Upgrade to Undermount Ceramic Round Sink
- Moen Eva Single Lever Faucet in Chrome
- Upgrade to American Standard Cadet Pro Right Height Toilet
- Pot Light for Tub/Shower on a Separate Switch

Stainless Steel Appliance Package - Install Included

- Gas Line to Stove (Connection Not Included)
- Waterline to Fridge (Connection Not Included)
- Upgrade to Amana Gas Range (To Replace Electric Range in Above Package)

THE BLUFFS AT HURON
A Parkbridge Community

Sales Centre & Model Homes
246 Lake Breeze Drive, Goderich, ON N7A 0B1
BluffsAtHuronSales@parkbridge.com | (226) 421-2431

Parkbridge