

# CREEKVIEW

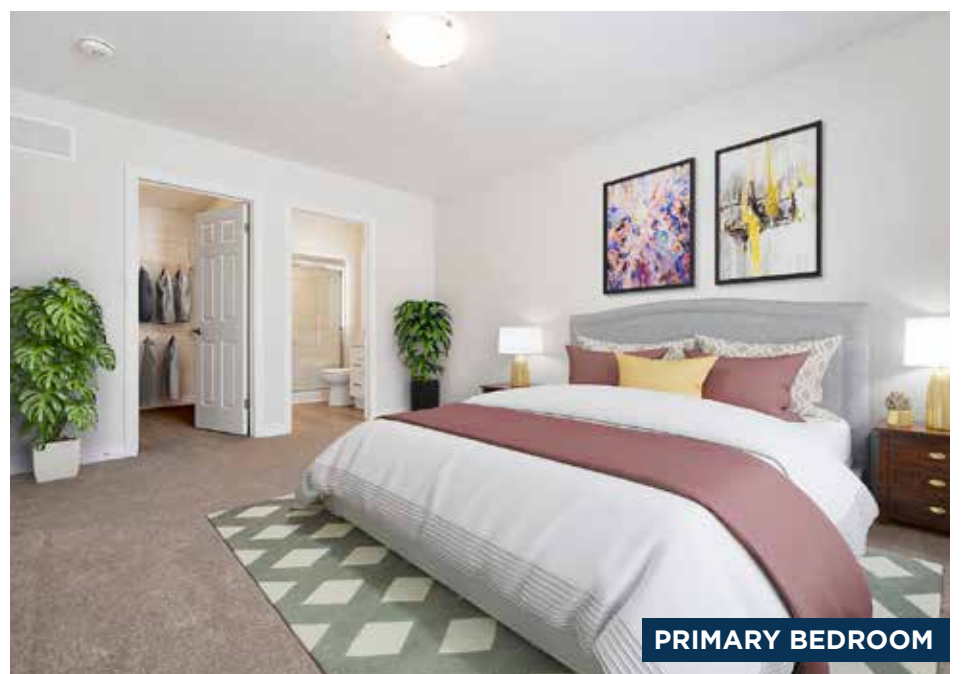
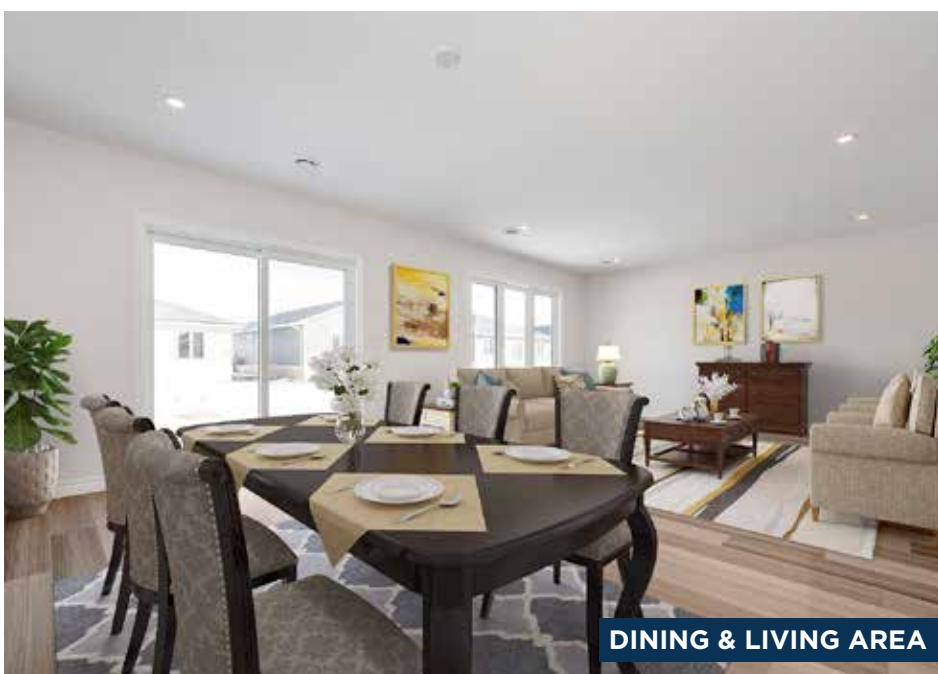
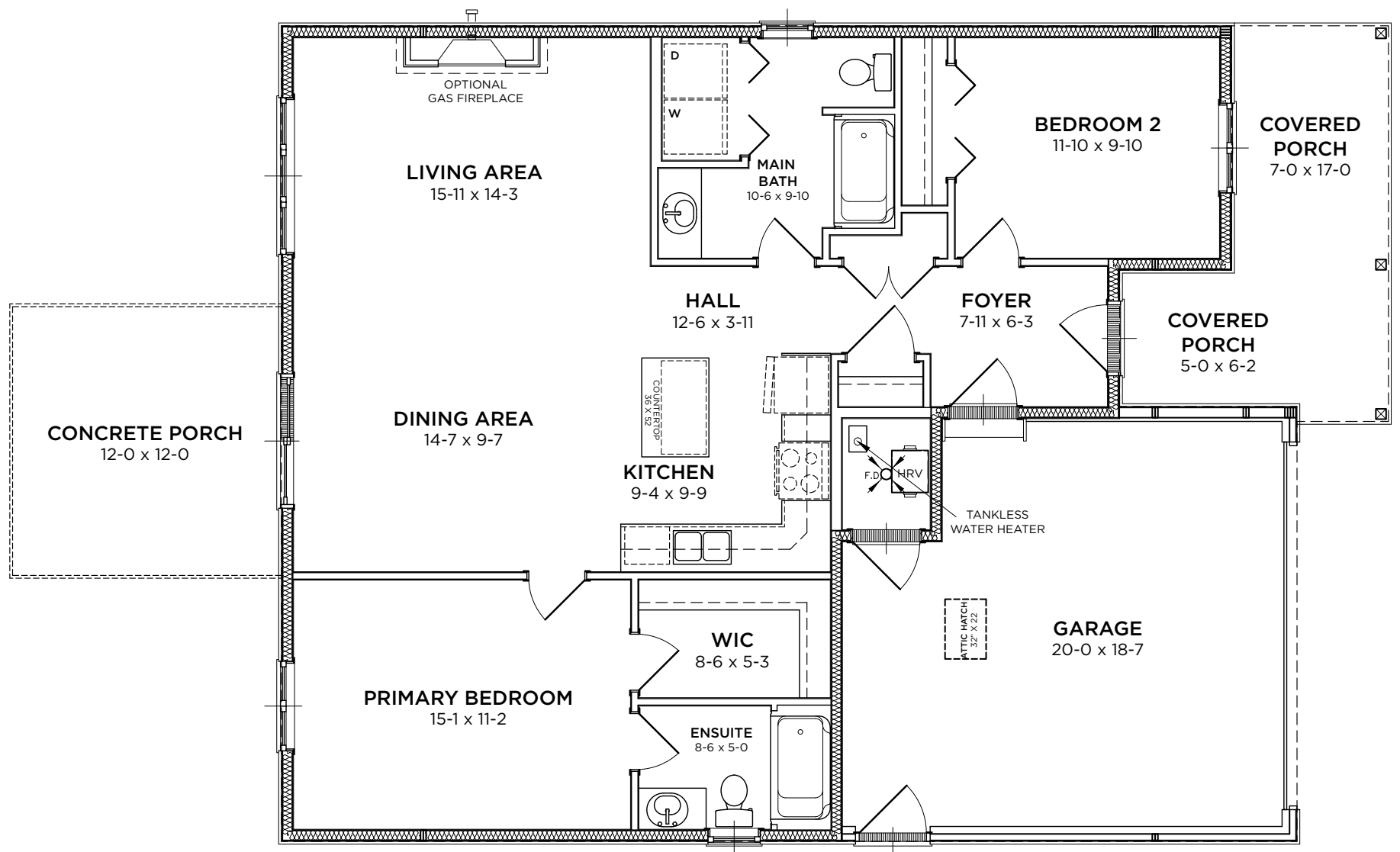
LOT#  
**383**

**\$446,900**

2 Bedrooms | 2 Bathrooms  
1,177 Sq. Ft.

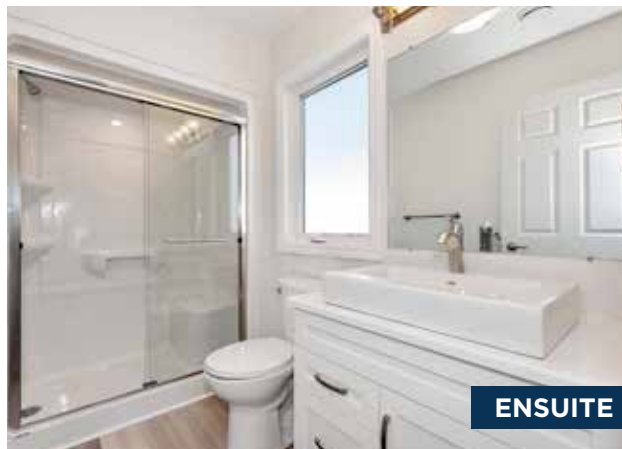
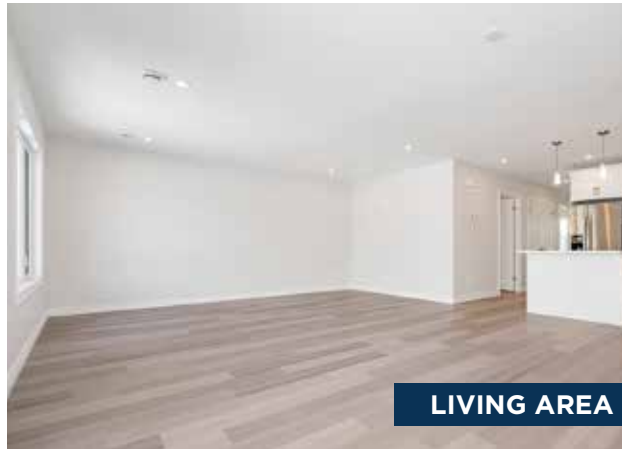


A stylish two-bedroom bungalow, Creekview optimizes the use of space. Each bedroom is located at opposite sides of the home, while an open concept living space brings you together at the heart of the home.



# CREEKVIEW

2 Bedrooms | 2 Bathrooms  
1,177 Sq. Ft.



## UPGRADES INCLUDED IN LOT 383

### General Exterior

- Pot Light in the Soffit

### Front & Rear Porch Options & Upgrades

- Gas Line to BBQ in Standard Location Near Door

### General Interior Options & Upgrades

- High efficiency, modern A/C unit

### Electrical Options & Upgrades

- Additional Cable Outlet
- Additional Phone Line
- Additional Receptacle
- Additional USB Receptacle

### Lighting Options and Upgrades

- Pot Lights in Main Areas of Home (as per plan)
- Two Pendant Lights Over Island with One Switch
- Center Light with Blocking and One Switch
- Additional Interior Pot Light
- Additional Dimmer Switch

### Cabinetry Options and Upgrades

- Cambria Countertops for Kitchen and Island
- Cambria Countertops for Bathrooms
- Extend Upper Cabinets to 35" Tall
- Extended Cupboard Over Fridge
- Upgrade to Mid-Level Crown Moulding
- Added One Bank of Oversize Pot Drawers in Island
- Upgrade to Lazy Susan in Corner Cupboard

### Kitchen Options and Upgrades

- Kindred Double Stainless Steel - Undermount

### Paint Options & Upgrades

- Upgrade All Paint to Eggshell Finish

### Main Bathroom Options & Upgrades

- Upgrade to Undermount Ceramic Round Sink

### Ensuite Options & Upgrades

- American Standard Boxe™ Ceramic Under Counter Sink
- Upgrade to American Standard Cadet Pro Right Height Toilet
- Pot Light for Tub/Shower on a Separate Switch

### Stainless Steel Appliance Package - Install Included

- Gas Line to Stove (Connection Not Included)
- Waterline to Fridge (Connection Not Included)
- Upgrade to Amana Gas Range (To Replace Electric Range in Above Package)

THE BLUFFS AT HURON  
A Parkbridge Community

Sales Centre & Model Homes  
246 Lake Breeze Drive, Goderich, ON N7A 0B1  
BluffsAtHuronSales@parkbridge.com | (226) 421-2431

Parkbridge