

# CREEKVIEW

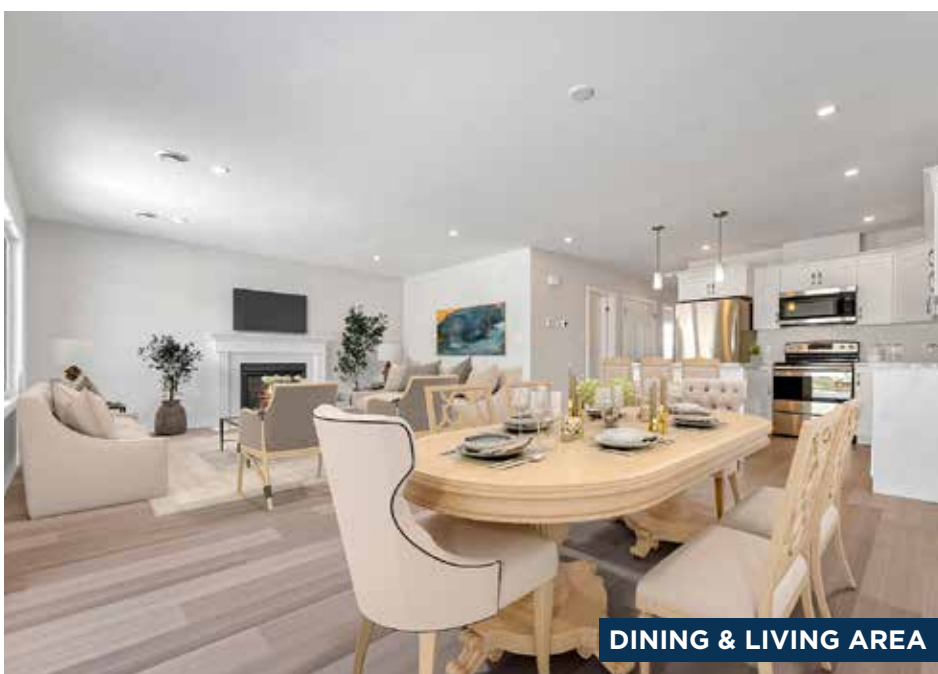
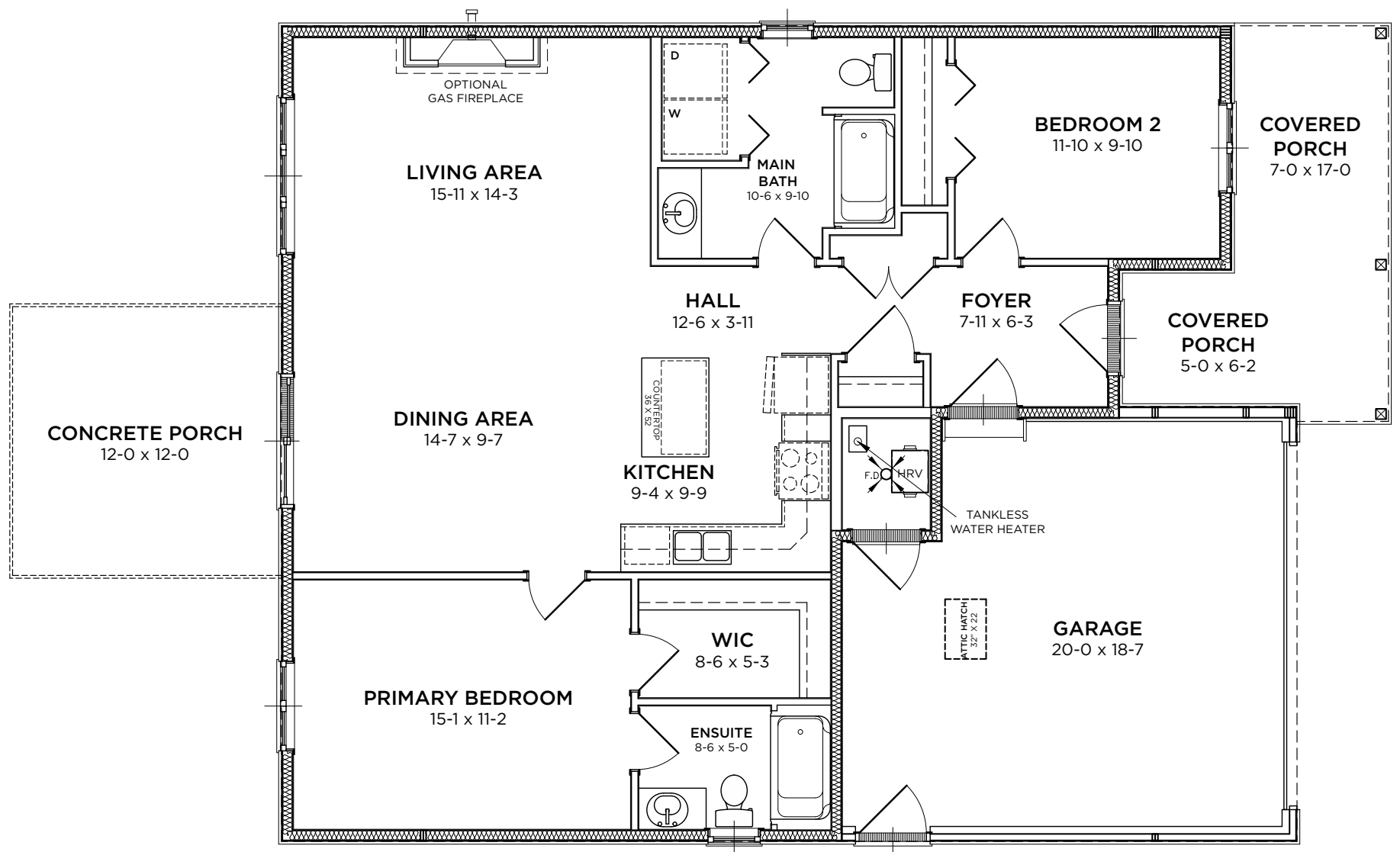
LOT#  
**380**

**\$435,900**

2 Bedrooms | 2 Bathrooms  
1,177 Sq. Ft.



A stylish two-bedroom bungalow, Creekview optimizes the use of space. Each bedroom is located at opposite sides of the home, while an open concept living space brings you together at the heart of the home.



# CREEKVIEW

2 Bedrooms | 2 Bathrooms  
1,177 Sq. Ft.



FOYER



LIVING AREA



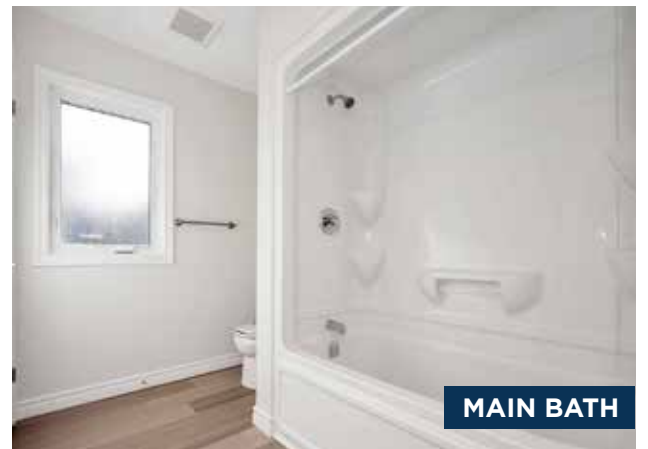
BEDROOM 2



KITCHEN



ENSUITE



MAIN BATH

## UPGRADES INCLUDED IN LOT 380

### General Exterior

- 5 Standard Pot Lights + 1 additional (as per plan)

### Front & Rear Porch Options & Upgrades

- Gas Line to BBQ in Standard Location Near Door

### General Interior Options & Upgrades

- High efficiency, modern A/C unit

### Electrical Options & Upgrades

- Additional Cable Outlet
- Additional Phone Line
- Additional Receptacle
- Additional USB Receptacle

### Lighting Options and Upgrades

- Pot Lights in Main Areas of Home (as per plan)
- Two Pendant Lights Over Island with One Switch
- Additional Interior Pot Light
- Additional Dimmer Switch

### Living Room Fireplace

- Gas Fireplace with Classic Traditional Mantle

### Cabinetry Options and Upgrades

- Extended Cupboard Over Fridge
- Upgrade to Mid-Level Crown Moulding
- Added One Bank of Oversize Pot Drawers in Island
- Upgrade to Lazy Susan In Corner Cupboard

### Paint Options & Upgrades

- Upgrade All Paint to Eggshell Finish

### Ensuite Options & Upgrades

- Upgrade to American Standard Cadet Pro Right Height Toilet

### Stainless Steel Appliance Package - Install Included

- Waterline to Fridge (Connection Not Included)

THE BLUFFS AT HURON  
A Parkbridge Community

Sales Centre & Model Homes  
246 Lake Breeze Drive, Goderich, ON N7A 0B1  
BluffsAtHuronSales@parkbridge.com | (226) 421-2431

Parkbridge